



# Corporate sponsorship

Registered charity 1199054

## Contents

- 1) Our mission
- 2) How we use your sponsorship
- 3) Benefits
- 4) Sponsors wall
- 5) Sponsorship fees
- 6) Contact
- 7) Terms

## Contact

Rob Watson (Chair of Trustees)

01332 899 505

[dcm@derbycomputermuseum.co.uk](mailto:dcm@derbycomputermuseum.co.uk)

# 1) Our mission



## To preserve and maintain history

The articles in our museum are mostly from the 80s and 90s and aren't that old in the grand scheme of things, especially if you compare it to other museum articles such as dinosaur remains. However, technology moves on so quickly and is thrown away just as quickly meaning that items commonplace 30 or 40 years ago are almost non-existent today.

As such, a huge part of our mission is to preserve and maintain this technology for future generations as a historical record.



## Education

To educate on computing history by showcasing it, preserving it, and exhibiting displays explaining history and having interactive exhibits.

To provide a space for primary and secondary schools to use.



## Work experience for Special Educational Needs (SEN) students

We provide work experience for sixth form students with Special Educational Needs (SEN) students. We are currently working with Horizons Sixth Form. In preparation for opening the students are cataloguing and asset tagging exhibits. Once we open some of the students will be helping on open days to help with their communication skills when helping visitors.



## Community / local / families

Your local area is only as good as you make it. I've noticed there's a lack of things for families to do in the city centre and it's moved "downhill" over the last decade. DCM intends to be a "go to" destination for families so parents and kids can enjoy and play with the exhibits.

As part of our local mantra we do our best to showcase any technology related to Derby, the East Midlands, and the UK. We also aim to work with local businesses, and local community organisations.

## 2) How we use your sponsorship



### To get open

The museum intends to open Autumn/Winter 2022. There's quite a few things that need to fall into place to make this happen and they all either involve time or money.

We need to raise funds through sponsorship to pay for:-

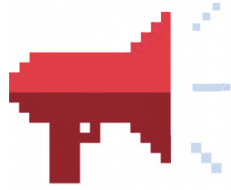
- CCTV (we have about half the museum covered, but need 8x more cameras)
- Magnetic Fire Door Retainers + fitting
- Components to repair some of the exhibits
- Display screens
- Signage
- Fixtures & fittings
- ... the list goes on!

### Once we're open

Entrance fees are budgeted to help cover many of the ongoing costs, but are likely not to cover it entirely so we will be reliant on yearly corporate sponsorship. Our main ongoing costs are:-

- Rent of our two floors (about 1,600sqft)
- Electricity (running dozens of very old power hungry computers is NOT cheap!)
- Insurance
- etc

### 3) Benefits



#### Local awareness

With thousands of visitors projected each year when we open, sponsorship of Derby Computer Museum is a great way of raising brand awareness.



#### Attract employees

We know how hard it is to find staff these days! We'll attract a lot of people to DCM so sponsorship is a great way of raising awareness of your business to potential staff.  
*Especially useful if you run a tech business and want to get the attention of geeks visiting our museum!*



#### Tax deductible

Any donations to Derby Computer Museum are tax deductible. We're a registered charity, #1199054.



#### A warm and fuzzy feeling

Life is short, so it's nice to know that something you've done makes other people happy and contributes to the community. This will give you a warm and fuzzy feeling! :)

## 4) Sponsors wall

### Sponsors wall 1

This is located in the entrance/exit to the museum and it's impossible not to notice it on both your way in, and your way out! This wall is reserved for our GOLD level of sponsorship, for which there are only 6 spaces available.

There are numerous other benefits included in GOLD sponsorship, which is detailed in the benefits section, and fees section.



A special thank you  
to our sponsors...

Your logo here  
(A2)

Your logo here  
(A2)

Your logo here  
(A2)

Your logo here  
(A2)

Your logo here  
(A2)

Your logo here  
(A2)

This is located on the first landing of the museum, and is also impossible not to notice on entry/exit to the museum, or for visitors returning from the loo.

These are reserved for our BRONZE and SILVER sponsors, and is just one of the many benefits of sponsoring. More details included in the benefits and fees sections.



A special thank you to our sponsors...

Your logo here  
(A3)

Your logo here  
(A3)

Your logo here  
(A3)

Your logo here  
(A3)

Your logo here  
(A3)

Your logo here  
(A3)

Your logo here  
(A3)

Your logo here  
(A3)

Your logo  
(A4)

Your logo  
(A4)

Your logo  
(A4)

Your logo  
(A4)

Your logo  
(A4)

Your logo  
(A4)




Your logo  
(A4)

Your logo  
(A4)

Your logo  
(A4)

Your logo  
(A4)

## 5) Sponsorship fees

	 <b>GOLD</b>	 <b>SILVER</b>	 <b>BRONZE</b>
<b>Sponsorships available</b>	<b>SIX</b>	<b>EIGHT</b>	<b>TEN</b>
<b>Summary</b>	<p>Sponsor a room - <b>GOLD sponsors</b> have a room of your choice (out of those available) and in that room you will get:-</p> <p>2x <b>A2</b> banners with your logo on opposite ends of the room</p> <p>1x leaflet holder in the room (if relevant to your business)</p> <p>An <b>A2</b> banner on the entry/exit to the museum.</p> <p>Your logo on the sponsors page of our website.</p> <p>Your logo on the footer of every page on our website.</p>	<p>As a <b>SILVER sponsor</b> you'll have:-</p> <p>Your logo featured in <b>A3</b> size on our sponsor's wall in the entry/exit to the museum.</p> <p>Your logo on the sponsors page of our website.</p> <p>Feature on our social media.</p>	<p>As a <b>BRONZE sponsor</b> you'll have:-</p> <p>Your logo featured in <b>A4</b> size on our sponsor's wall in the entry/exit to the museum.</p> <p>Your logo on the sponsors page of our website.</p>
<b>Banner on sponsorship wall in the museum</b>	A2	A3	A4
<b>Website - your logo on sponsors page</b>	Yes	Yes	Yes
<b>Website - your logo footer of <u>every</u> page</b>	Yes		
<b>Feature on our social media</b>	Yes	Yes	
<b>Donation</b>	£999/year	£399/year	£199/year

*We are a registered charity #1199054 so your donation is tax deductible!*

## 6) Contact

Rob Watson (Chair of Trustees)

01332 899 505

[dcm@derbycomputermuseum.co.uk](mailto:dcm@derbycomputermuseum.co.uk)

## 7) Terms

- Your year sponsorship starts the day the museum opens so if we don't open for 2 months after your sponsoring, you're getting 14 months of sponsorship
- The Derby Computer Museum trustees reserve the right to decide which organisations are accepted as sponsors
- Derby Computer Museum reserves the right to change the layout of the sponsorship walls where appropriate.
- Reserve the right to remove sponsors who are found to indulge in any illegal, immoral or illicit activity, without refund
- Full T&Cs available on request